

aerospace
climate control
electromechanical
filtration
fluid & gas handling
hydraulics
pneumatics
process control
sealing & shielding



ANALEXpqL
pqL Auxilium Software



ENGINEERING YOUR SUCCESS.

pqLAuxilium provides a user-friendly, PC based, software interface that allows operators to remotely control their ANALEXpqL instrument with minimum intervention required.

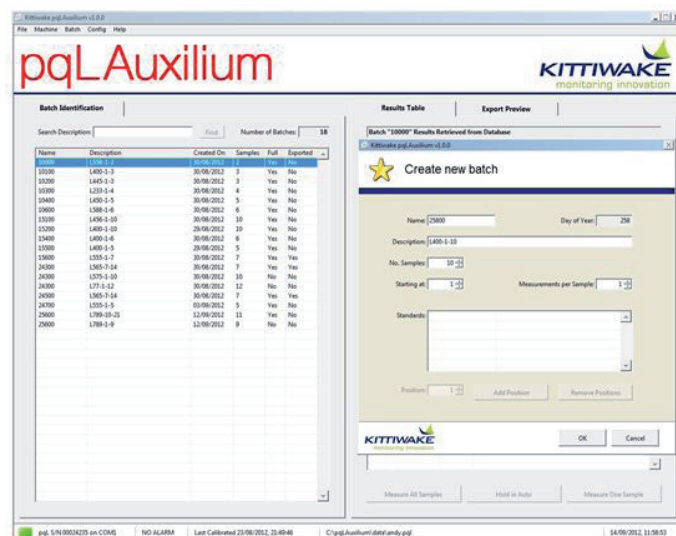
Allowing programmable, automatic repeat measurements of samples, pqLAuxilium allows users to store batch sample results, organised in a Database Structure. With both automatic and manual measurement options, the output provides a customizable LIMS-compatible batch output file.

The software has multiple features to make the operation and integration of your ANALEXpqL into your lab environment as simple as possible. Allowing the instrument to fit your sampling handling procedures, ensures that the sample testing process runs as smoothly as possible. Averaged sample measurement, remote calibration, carousel alignment and automatic detection of the connected ANALEXpqL instrument are all possible with the easy to use user interface.



Benefits

- Increased throughput of samples.
- Faster screening times.
- Simple integration with existing platforms.



Specifications

Operating System: Microsoft Windows 7 (64 & 32 bit)

Screen Resolution: Minimum 1280 x 960 pixels

Connection to PC: Serial Port (RS232) or USB port (via RS232 to USB converter)

Wiring to PC: Null-modem serial cable provided with ANALEXpqL



Parker Kittiwake

Hydraulic Filter Division Europe
 3 - 6 Thorgate Road, Littlehampton, BN17 7LU
 United Kingdom
 Tel: +44 (0)1903 731470
 Fax: +44 (0)1903 731480
 Email: kittiwakesales@parker.com
 Web: www.kittiwake.com