

RESISTANCE THERMOMETER
Measuring insert: Fixed

Type:
RT-RST-MC

Sheet No.
1-56 V2.1
5857-E010818V2.1

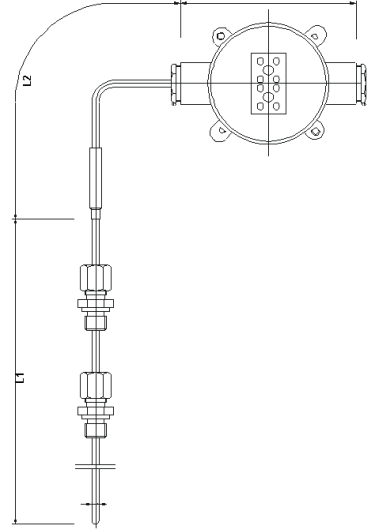


Application:

- Stern Tube

Properties:

- Pt100 resistance thermometer in acc. with IEC 60751
- Measuring insert: fixed
- Mechanical and thermal stress in accordance with DIN 43772
- Process attachment: adjustable coupling
- Constructed so as to have the greatest possible accuracy and durability during demanding operating conditions that means:
 - It is robust
 - It is flexible/ bendable (do not bend the first 50mm!)
 - It has a quick reaction time
- Outer protective sheath: acid-proof steel
- IP67
- Electrical connection: Cable or Connection box
- Mechanical connection: 2 adjustable couplings
- Marine approved by: DNV, LR, GL, NK, RINA, ABS, KR and BV
- Approved by: GOST and GOST Metrology



MECHANICAL SPECIFICATIONS

Protective sheath: -----
EN 1.4571 (AISI 316Ti)

Mineral insulated tube diameter [mm]: -----
Ø3 mm
Ø4.5 mm
Ø6 mm
Special

Mineral insulated tube length L1 [mm]: -----
2000 mm
3000 mm
5000 mm
7000 mm
10000 mm
Special

Adjustable coupling: -----
Adjustable 1/4" BSP
Adjustable 3/8" BSP
Adjustable 1/2" BSP
Special

ELECTRICAL SPECIFICATIONS

---Sensor element:
1xPt100
2xPt100
1xPt1000 (only cl. B 1/1 and cl. A)
2xPt1000 (only cl. B 1/1 and cl. A)

---Number of conductors:
2-wire (recommended only for Pt1000)
3-wire
4-wire

---Cable type:
TBT (Teflon-Braid-Teflon)
Special

---Cable Length L2:
3 m, 5 m, 7 m, 10 m
Special

---Media temperatures max:
+600°C
Special

---Tolerance in acc. with IEC 60751:
Type A DIN (i.e.±(0,15+0,002xTactual) °C)
Type B 1/1 DIN (i.e.±(0,3+0,005xTactual) °C)
Type B 1/3 DIN (i.e.±(0,1+0,0017xTactual) °C)
Type B 1/6 DIN (i.e.±(0,05+0,00083xTactual) °C)
Type B 1/10 DIN (i.e.±(0,03+0,0005xTactual) °C)

Link for further information: [Pt100 Tolerance](#)

RESISTANCE THERMOMETER
Measuring insert: Fixed

Type:
RT-RST-MC

Sheet No.
1-56 V2.1

5857-E010818V2.1



Calibration:

Temperature calibration are used to verify and certify the sensor to have the correct accuracy. We can do either: "In house" or "Accredited" calibration. Accredited is certified by 3.e part. Normally we do a calibration in 3 points.

Enhanced performance services:

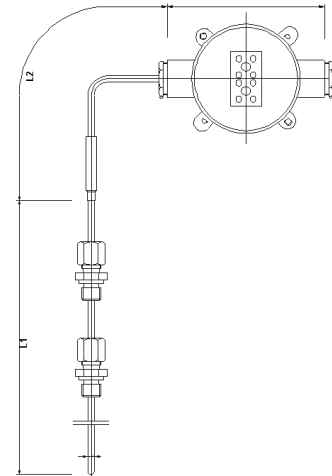
Cold applications (below -50°C) will influence the material and the measurement. CRYO treatment is needed to ensure a correct and working sensor down to -196°C.

A sensor will always drift over time, especially when there are high temperature fluctuations.

With "Ageing treatment" we stabilize the sensor to ensure a minimum drift over time. The benefits are long term stability, more correct measurement and easier planning of calibration periods.

Documentation:

Please order the correct documentation when ordering the sensor.



SIGNAL PROCESSING

Enclosure

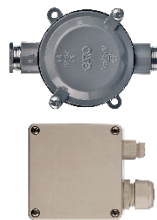
Marine Box (112x82x42mm) -----

ABS Box (82x80x56mm) -----

NONE -----

Programmable mounted transmitter:

Measuring range min/max: -200/+850°C
Output: 2-wire, 4-20 mA
Min. span: 25°C
Ambient temperature min/max: -40/+85°C



- [5333A Uninsulated for RTD](#)
- [5333D EEX Uninsulated for RTD](#)
- [5332A Uninsulated for RTD](#)
- [5332D EEX Uninsulated for RTD](#)
- [5331A Galvanic Isolated RTD / TC](#)
- [5331D EEX Galvanic Isolated RTD / TC](#)
- [5335A Hart 5 Protocol Standard](#)
- [5335D Hart 5 Protocol CSA, FM, ATEX, IECEx](#)
- [5337A Hart 5 & 7 Protocol](#)
- [5337D Hart 5 & 7 Protocol CSA, FM, ATEX, IECEx](#)



Transmitter Type:			
4 mA =	C°	20 mA =	C°

- [5350A Profibus standard](#)
- [5350B Profibus ATEX, FM and CSA](#)

Link to further information:

[Transmitter Overview](#)

[Programmable rail mounted transmitter](#)

CALIBRATION

---Calibration:

In house (Span -33°C - +700°C)

Accredited – in laboratory (-196°C - +1200°C)

1.	Point	°C
2.	Point	°C
3.	Point	°C

More point on request

Enhanced performance services

-----Cryo treatment.

For temperature sensor under -50°C

-----Ageing:

For long term stability.
Secure minimum drift of sensor accuracy

-----Documentation

Certificate: 3.1 Material
Certificate of origin
Certificate of conformity
Certificate of GOST

-----Marine Certificate

Certificate of DNV.GL
Certificate of BV
Certificate of Rina
Certificate of ClassNK
Certificate of LR
Certificate of ABS

Other on request