

# ShaftTRQ

## – Simplified Shaft Power Measurement



The ShaftTRQ is a continuous shaft power measurement system that is easy and flexible to install and simple to operate.

That ShaftTRQ consists of two magnetic sensor belts and a terminal box with a screen. The touch screen display is intuitive to use and can display KPI's such as: Torque [kNm], RPM, shaft power [kW] and live load diagram. Additionally, it can automatically generate reports (daily or sea trial).

The design allows for easy installation and is done by strapping the two magnetic belts to the propeller shaft placing them 1,5 m to 2 m apart. We recommend installing the system with an intermediate shaft bearing in between and use the

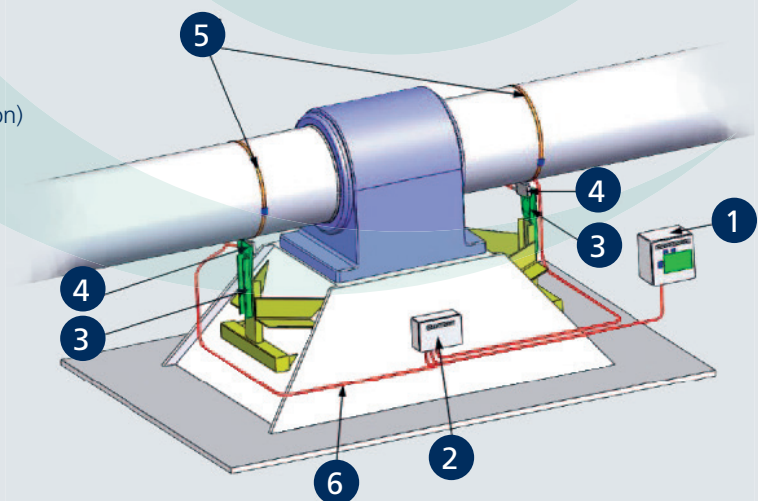
bearing socket for installation. The ShaftTRQ can be installed even if the sensor belts are installed on variable shaft diameters. If you have less than the required 1,5 m of space, a special solution can be made on request.

### Easy installation

ShaftTRQ comes with a comprehensive preparation and installation manual with pictures which makes it easy for your crew to perform the installation. Furthermore, zero calibration can also be performed by your crew.

### ShaftTRQ complete package (scope of supply)

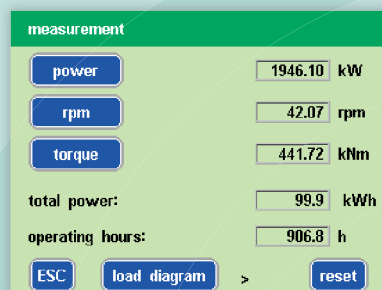
1. Terminal Box (wall or console mounted version)
2. MWE Box
3. 2 Set of Bracket and holders for EXFR sensors
4. 2 pcs. EXFR sensors (depending on shaft diameter)
5. 2 pcs. sensor belts (depending on shaft diameter)
6. Prewired cable between MWE Box and EXFR sensors (appr. 3,7m)



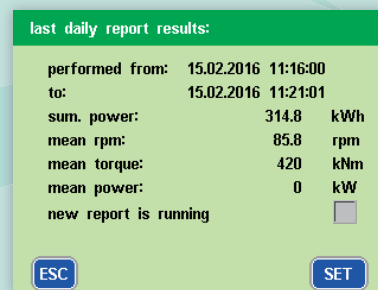
## Technical data:

Supply voltage	100 / 240 VAC, 50-60 Hz, 16A
Temperature range	Terminal and MWE box 0 °C to 60 °C EXFR sensors and belts -40 °C up to 85 °C
Shaft diameter	250 mm – 1000 mm (solution < 250 mm on request)
Sensor measuring accuracy	< 0,1 fs
Speed range	Up to 250 RPM (> 250 RPM on request)
Torque / RPM measurement	High-resolution sensor, contact free
Performance data output	4-20 mA signals, RS485 (NMEA 183)
Data logging	Mini SD card
Alarm outputs	Engine overload, system error (pot. Free contacts)
Protection class	Terminal and MWE box IP54 EXFR sensors and belts IP67
Software update	Via USB stick (update file can be sent via email)
Optional equipment	Repeater display for ECR or bridge installation

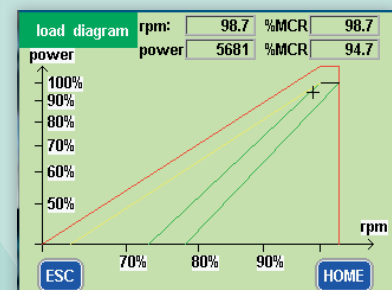
### Measurement Screen Terminal box



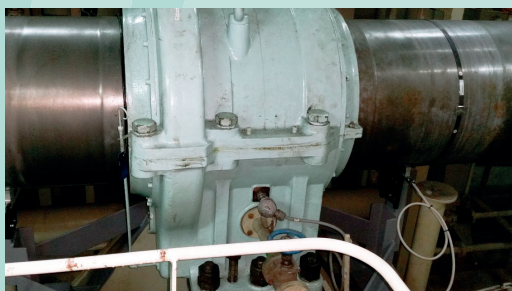
### Daily report Terminal box



### Propeller curve Terminal box



### Installation example



Insatech A/S  
Næstvedvej 73C  
DK-4720 Præstø  
Denmark

Tel. +45 5537 2095  
marine@insatech.com  
[www.insatechmarine.com](http://www.insatechmarine.com)