



Meet EEXI regulation with a shaft power limiter!

The ShaPoLi ECO 8 uses an existing torque meter to limit the shaft power of your ship, thereby reducing the CO₂ emissions in accordance with the IMO EEXI regulation. ECO 8 will help you monitor and record the shaft power and set the power limitations using any output signal. The solution has several type approval and OMM book certifications making it an obvious choice for your vessel.

The EDIT ShaPoLi ECO 8 is connected to your existing torque meter and starts recording data when the shaft speed reaches 10 rpm. The data is shown on touch displays in for example the engine control room or bridge depending on your preferences.

If the shaft power exceeds your vessel's EEXI limit it will activate an audiovisual alarm, warning you that the ship has reached its power limit. The alarm sound can be turned off, but the visual alarm will be shown until the ship's power is below the limit. The limiter can be overridden to handle extraordinary situations like bad weather, piracy, etc.

The system can use 1 or 2 third-party torque meters and can record the following data:

- Power (kW)
- Speed (rpm)
- Torque (kNm)
- Thrust (kN)
- Override actions
- Alarms
- Optional measurements (e.g. main engine flow meters)

Type Approvals and OMM Book certifications

EDIT Automation's ShaPoLi ECO 8 is certified based on the IACS Rec.172 EEXI regulations and is type and OMM book certified with:

- ABS
- Bureau Veritas
- DNV
- Lloyd's Register
- RINA

And OMM book certified with:

- CCS
- ClassNK
- Korean Register

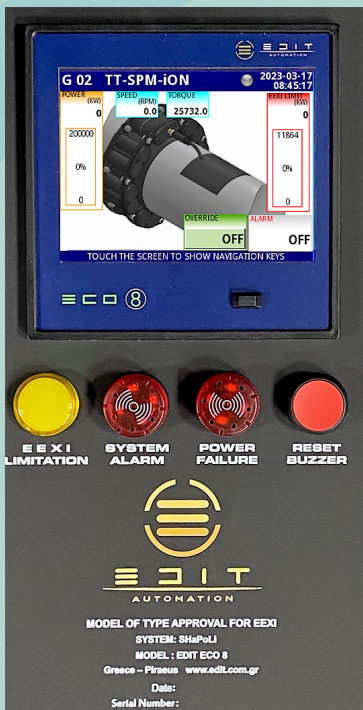
Compatibility

The system works and is already used with a range of torque meters from:

- Binsfeld
- TX Marine
- Trelleborg
- Kyma
- Lemag
- Etc.



EDIT ECO 8 with type approvals and OMM book certification



Optional GPS

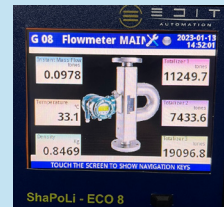


Free DAQ Manager Software

For visualization and reporting



Integrate flowmeter measurements



Binsfeld TorqueTrak SPM-iON



Insatech ShaftTRQ



ECO 8 Features

- Isolated universal inputs and outputs
- Ethernet, RS 485, RS 232, USB HOST NMEA
- 3 years of data collection
- Real-time analysis & statistical diagram
- Override protected by password
- Customized monitoring systems

Insatech A/S
 Naestvedvej 73C
 DK-4720 Praestoe

Tel. +45 5537 2095
 marine@insatech.com
 www.insatechmarine.com