



# Improve CII and Manage EEXI

## Monitor Your Vessel's Performance and Improve CII Rating

Carbon Intensity Indicator (CII) is a guideline adopted by the IMO (MEPC 78) as part of its greenhouse gas (GHG) mandatory measures.

### Your Deadline Was Yesterday!

From 2023 you are required annually to calculate and report the Carbon Intensity Indicator and rating (A-E) for your vessel(s).

The CII is based directly on fuel consumption, which is influenced by how a specific ship is operated in combination with its technical efficiency and fuel.

It is essential for you as an owner/operator to continuously monitor your vessel's performance, thus being able to make performance improvements and changes to secure a good CII rating. Furthermore, it will be beneficial for you to accurately monitor the CII performance in real time to avoid having to take drastic measures unexpectedly.

Whether it is instrumentation, data collection, or a complete turnkey solution you need – we can help you!

We offer everything within:

- Flow Meters
- Torque Meters
- Fuel Consumption Systems
- Performance Monitoring Systems
- Complete Turnkey Solutions

## Meet EEXI Regulations With a Shaft Power Limiter!

Shaft power limiters are required for ships that are subject to the EEXI regulations under the International Maritime Organization's (IMO) amendments to the MARPOL Annex VI convention. The purpose of a shaft power limiter is to ensure that the ship operates within its EEXI limits and does not exceed its calculated maximum power output.

We can help you manage your EEXI with EDIT ECO8 ShaPoLi, the only shaft power limiter with 5 type approvals that limit the power output of a ship's propulsion system to a maximum level that is determined by its Energy Efficiency Existing Ship Index (EEXI) value.

**Want to learn more? Please contact us.**

Insatech A/S  
Naestvedvej 73C  
DK-4720 Praestoe

Tel. +45 5537 2095  
marine@insatech.com

[www.insatechmarine.com](http://www.insatechmarine.com)

**For more information,  
please contact**

Tine Kaalund Jensen,  
Global Key Account Manager  
+45 2761 4562  
Tine.Jensen@insatech.com



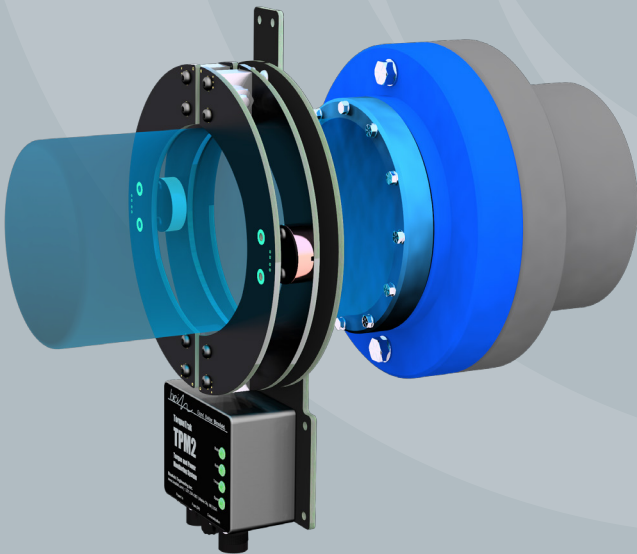
## EDIT ECO8 – ShaPoLi



## Yokogawa Coriolis Mass Flow Meter



## Binsfeld TorqueTrak TPM2 Torque Meter



## Insatech ShaftTRQ Torque Meter

