

GE Energy

Masoneilan* Valves OEM Parts

Exceptional Performance to
Handle the Toughest Conditions



imagination at work



Masoneilan Valve Parts from GE Energy

For more than a century, Masoneilan valve parts have delivered exceptional performance. Expertly developed and rigorously tested, they meet high standards for quality, safety and dependability. That tradition of excellence continues today with the original Masoneilan parts program from GE.

A Tireless Commitment to Research and Development

Original Masoneilan valve parts from GE are built for specific applications, designed and subjected to a strenuous testing regimen to ensure years of reliable, cost-effective operation, and carefully installed with precision by factory-certified Masoneilan Authorized Repair Center (MARC*) representatives.



Sophisticated Parts Development

Equipped with advanced tools, equipment and technology, GE's research and development and testing facilities support some of the most sophisticated parts development and quality assurance initiatives. Our impressive ISO 9000-certified sites and our team of experts apply industry practices and processes to create exceptional products.



Many Parts are Difficult to Reverse Engineer

Third parties typically have no way of knowing if a special material has been applied or whether the surface has been specially treated with processes such as "shot peening" to induce compressive stress. Attempting to recreate the part without the correct surface or material treatments could result in stress corrosion cracking when the part is put into service and can negatively affect critical sealing and guiding functionality. This can shorten the life of the control valve, and can diminish positioning performance.



Engineered for Quality

We take quality further by engineering valve parts to meet exact application specifications through a variety of specialized construction techniques, processes, treatments and materials. As a result, it is hard to fully duplicate or reverse-engineer a Masoneilan valve part.

Depending on the circumstances, any slight deviation from the original design, materials or critical treatment processes could result in problems such as corrosion, cracking, poor positioning control or sealing performance and shorter service life. More importantly, design alterations, including unintentional ones, could pose safety threats.

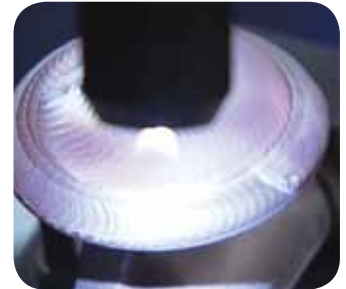




Expertly Developed, Rigorously Tested

Use Only Original Masoneilan Valve Parts

Do you know the exact tolerances applied to this face and the thickness that is needed to provide endurance and exact shut-off control? A third party part vendor probably doesn't. We do. Our Computer Numerically Controlled (CNC) equipment and robotic hard-facing machine can provide exact tolerances for enhanced performance.



Safeguard Your Investment

Design alterations, including unintentional ones, could pose safety threats. Replicators might not know the reason for the design of a critical feature, material, or process; can they provide safe performance? Use genuine OEM parts; don't take the risk by using copies. Plus, using Masoneilan valve parts from GE helps ensure that your valve warranty remains intact.



Global Service Network

Quality products combined with expert service have made GE an industry innovator for more than a century. GE offers that expertise with more than 75 Masoneilan Authorized Repair Centers (MARC) located in over 30 countries worldwide. You can rely on a MARC location near you for convenient service and quick responsiveness.

Each MARC location adheres to ISO 9000 standards and is staffed with highly qualified technicians who deliver exceptional support and technical expertise. All MARC facilities are equipped with machine tools and inspection facilities as well as assembly, paint, and test equipment — all backed by GE's quality assurance.



Superior Dependability

Genuine Masoneilan valve parts from GE are manufactured to the exacting requirements of the original valve, allowing us to deliver the most dependable long-term performance, help prevent unscheduled downtime, and reduce the need for costly, time-consuming repairs.

DIRECT SALES OFFICE LOCATIONS

BELGIUM

Phone: +32-2-344-0970
Fax: +32-2-344-1123

BRAZIL

Phone: +55-11-2146-3600
Fax: +55-11-2146-3610

CHINA

Phone: +86-10-8486-4515
Fax: +86-10-8486-5305

FRANCE

Courbevoie
Phone: +33-1-4904-9000
Fax: +33-1-4904-9010

GERMANY

Viersen
Phone: +49-2162-8170-0
Fax: +49-2162-8170-280

INDIA

Mumbai
Phone: +91-22-8354790
Fax: +91-22-8354791

New Delhi

Phone: +91-11-2-6164175
Fax: +91-11-5-1659635

ITALY

Phone: +39-081-7892-111
Fax: +39-081-7892-208

JAPAN

Chiba
Phone: +81-43-297-9222
Fax: +81-43-299-1115

KOREA

Phone: +82-2-2274-0748
Fax: +82-2-2274-0794

MALAYSIA

Phone: +60-3-2161-0322
Fax: +60-3-2163-6312

MEXICO

Phone: +52-5-310-9863
Fax: +52-5-310-5584

THE NETHERLANDS

Phone: +0031-15-3808666
Fax: +0031-18-1641438

RUSSIA

Veliky Novgorod
Phone: +7-8162-55-7898
Fax: +7-8162-55-7921

Moscow

Phone: +7 495-585-1276
Fax: +7 495-585-1279

SAUDI ARABIA

Phone: +966-3-341-0278
Fax: +966-3-341-7624

SINGAPORE

Phone: +65-6861-6100
Fax: +65-6861-7172

SOUTH AFRICA

Phone: +27-11-452-1550
Fax: +27-11-452-6542

SOUTH & CENTRAL

AMERICA AND THE CARIBBEAN
Phone: +55-12-2134-1201
Fax: +55-12-2134-1238

SPAIN

Phone: +34-93-652-6430
Fax: +34-93-652-6444

UNITED ARAB EMIRATES

Phone: +971-4-8991-777
Fax: +971-4-8991-778

UNITED KINGDOM

Wooburn Green
Phone: +44-1628-536300
Fax: +44-1628-536319

UNITED STATES

Massachusetts
Phone: +1-508-586-4600
Fax: +1-508-427-8971

Corpus Christi, Texas

Phone: +1-361-881-8182
Fax: +1-361-881-8246

Deer Park, Texas

Phone: +1-281-884-1000
Fax: +1-281-884-1010

Houston, Texas

Phone: +1-281-671-1640
Fax: +1-281-671-1735

California

Phone: +1-562-941-7610
Fax: +1-562-941-7810



* Masoneilan and MARC are registered trademarks of the General Electric Company. Other company names and product names used in this document are the registered trademarks or trademarks of their respective owners.

© 2012 General Electric Company. All rights reserved.

GEA19506 04/2012
[Formerly Masoneilan BE1001-OEM]